



Te Rōpū Aukati Tūkinō Kararehe



YEAR IN REVIEW

2023-24

“To our amazing supporters, we truly couldn’t have done this without you. Your kindness and support have made a real difference in the lives of so many animals. Thank you for being with us every step of the way and for helping us make the world a better place for them.”

He waka eke noa. (We’re all in this together)



SPCA BOARD:

- David Broderick - Board Chair
- David Heald
- Jane Holland
- Jennifer McGowan
- Julie Sellar
- Lizzy Ryley
- Steve Merchant

SPCA SENIOR LEADERSHIP TEAM:

- Todd Westwood - CEO
- Jason Copus - CFO
- Dr Arnja Dale - Chief Scientific Officer
- Dr Corey Regnerus-Kell - GM - Animal Services
- Julia van de Coolwijk - GM - Engagement
- Liz Andrews - GM - People, Culture and Safety
- Cathy Crichton - GM - Retail

Purpose

To advance animal welfare and prevent cruelty

Vision

A world where all animals are treated with respect and kindness

Founding ethos

We speak for those who cannot speak for themselves

Values



CONTENTS

01 Intro from the Chair	
The Chair’s report	4
CEO’s report	6
02 Making Care Possible	
Caring for the animals of SPCA	9
Rescued to rehomed: Kanda’s story	9
The foster family of SPCA	10
Collaboration	11
Alongside the veterinary profession	11
Desexing to curb the cycle of neglect	12
03 Making Animal Voices Heard	
Role of Inspectorate	15
Role of advocacy	18
SPCA Certified® – driving change	20
Making change through education	21
04 Making Support Possible	
Op Shops	25
Dedicated donors	26
Government funding	27
Grant funders and trusts	28
Partners and sponsors	29
Legacies	30
05 Making it Possible Behind the Scenes	
Our team	33
Our volunteers	34
Our community	36
06 SPCA Annual Snapshot	
Impact report	38
Social and community impact	40

01 Intro from the Chair



The Chair's report

Thank you for taking the time to read SPCA's Annual Review for the year 2023-2024. This report summarises the positive impact of SPCA's efforts in the community to support animal welfare. As the Chair of SPCA, and with the aim of providing you with a better understanding of the animal welfare challenges across New Zealand, I want to reflect on the past financial year, highlighting the number of animals our Inspectorate, Centre teams, desexing programme, SPCA Certified, and advocacy work have helped.

Before I start to share some of SPCA's work in the community, on behalf of the Board, I am pleased to welcome our new CEO Todd Westwood, who joined us in October 2023. Todd has already made a notable impact with his focus on a values-driven culture to deliver outstanding animal welfare. His leadership is ensuring a future where our mission and values remain central to everything we do.

At SPCA, we frequently hear about innocent animals surviving tough times and facing unimaginable cruelty. These distressing stories motivate us to strive for change. Despite natural disasters and economic fluctuations, our team remains committed to helping animals. We do this because we firmly believe every animal deserves a life free from pain and fear, filled with love and care.

That is why we continue to push for the continuation of the current ban on Live Exports and advocate for legislative changes such as those concerning chained dogs, Companion Animal Codes of Welfare, and banning commercial greyhound racing in New Zealand. These changes will enhance the welfare of all animals.

Our two-year desexing campaign with a target of 30,000 procedures to tackle overpopulation was successful, with 36,225 animals being desexed over the period, preventing an estimated 135,873 unwanted animals from being born. Even though the two-year campaign has ended, our desexing work at SPCA doesn't stop. By preventing so many unwanted animals from being born, we know this will have a long-term positive impact that will be noticeable in our communities.

Desexing reduces the number of stray and unwanted animals and also has other health benefits for your pet. Snip 'n' Chip is one of our ongoing desexing initiatives for cats, offering cat owners in targeted communities

the chance to desex their companion animal. We provide vouchers that cat owners can take to one of our participating vet clinics, where the desexing surgery and microchipping will be carried out. Since our campaign began, we have desexed a total of 15,454 cats through our Snip 'n' Chip campaigns, preventing an estimated 61,816 unwanted kittens from being born.

We would not have been able to achieve any of this without the support of our community. I want to express my gratitude to everyone who supports SPCA - our volunteers, donors, Centre staff, Inspectorate, Op Shop and administration teams - all our supporters and partners. Your generosity and dedication to the welfare of animals in New Zealand makes a significant difference.

The rising cost of living continues to have an impact on companion animals. Many families have struggled to afford the cost of desexing their pets, leading to an increase in abandoned animals. Additionally, the cost of living has resulted in longer stays for animals in our care, as potential adopters face financial constraints. People are struggling to find time to volunteer and foster as they need to work longer to pay for rising costs. These challenges are testing our resilience, but we remain dedicated to animal welfare.

With your help and donations, we have been able to care for 30,242 vulnerable animals in the past year. Your contributions also meant we successfully rehomed 16,071 animals. Our commercial and community rescue partners help us to provide essential medical care, food, and shelter. All of this support provides the animals of SPCA with safe environments to heal and recover.

Your support also helps us to push for stronger animal welfare laws and regulations and educate communities about responsible pet ownership - we are making a difference in the lives of animals.

While we face changes, some things stay the same. We keep working together to improve the health and welfare of all animals across New Zealand. Every animal we've saved, every life we've improved, and loving home we've found is thanks to your support. Thank you, we couldn't do it without you.

David Broderick, SPCA Chair



CEO's report

Hello, this year I have been warmly welcomed into the SPCA family as your new CEO. This past year has been one of both learning and implementing changes to support the successful operation of SPCA. While our incoming animal numbers have decreased, our operational costs have risen due to the current financial environment in New Zealand. This highlighted the need to fully understand the underlying factors and adapt our strategies accordingly.

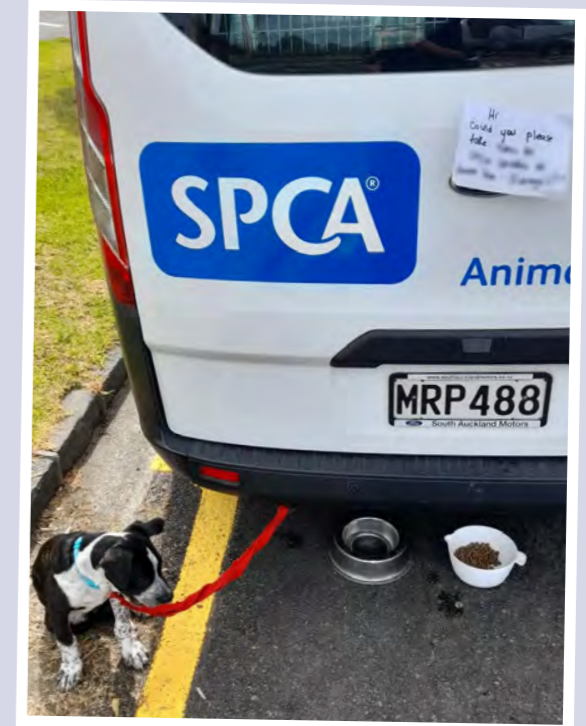
Much like the community we serve, 2024 has been a challenging year for SPCA. Our economy, and

therefore the community we serve, is under immense pressure. We have seen this reflected in the number of animals coming to us due to hardship. The length of stay for animals is longer than desirable as people struggle with affordability, impacting adoptions. Additionally, while we have been strongly supported through legacies, this masks challenges with traditional fundraising and appeal income.

That is why I'm so proud to present our achievements to you this year. Despite these pressures, we have challenged ourselves and stepped up to support the

CASE STUDY

When one of our Field Officers returned to his vehicle, he found a pup tethered to the back, positioned in the shade with water and food within reach. A note attached to the vehicle asked if SPCA could take the pup, as the owner could no longer care for him. This situation highlights the unfortunate reality for many pet owners in New Zealand, exacerbated by the cost-of-living crisis. We are grateful to the owner for ensuring the pup's immediate needs were met, but it is heartbreaking to see someone who cares for their pet forced to give them up. SPCA is committed to supporting animals and their owners, despite the growing demand for our services.



community, ensuring that animals do not suffer. We continue to support and promote keeping and adopting animals into their forever loving homes in the community.

Our work extends far beyond caring for the animals in our Centres. We are embedded in the community, providing education, advocacy, and support to ensure the welfare of all animals, as well as enforcing the Animal Welfare Act through our Inspectorate. Achievements this year reflect our commitment to this mission:

- Total numbers of animals cared for 30,242
- 16,071 animals successfully adopted
- Thousands of food parcels delivered to the community
- 32,984 animals microchipped and desexed (not audited and includes community outreach)
- 78 submissions on animal welfare issues
- 1,207 schools using SPCA teachers' portal
- 63 prosecution charges filed
- 341 SPCA Certified audits of farming facilities

These numbers tell a story of dedication and impact. However, they are only part of the picture. Our true

success lies in the lives we touch and the communities we support.

I would like to extend my sincere thanks to my Senior Leadership Team, all SPCA employees, volunteers, fosterers, private and public funding partners, all donors, major and small donors, and affiliated vets and welfare groups. You are all working hard across the country to support us, so we can deliver our services to help the animals of New Zealand.

As you read this report, you will find highlights of our key achievements and impactful stories that demonstrate the breadth and depth of our work. From desexing programmes to community outreach, each section showcases the collective effort that makes our work possible.

Thank you for your continued support of me, my team and your ongoing commitment to animal welfare.

Todd Westwood,
SPCA CEO

02 Making Care Possible



Kanda Before

Caring for the animals of SPCA

Over the past year, our 28 Centres sheltered and cared for thousands of animals (30,242), thanks to the generous support of our donors, partners (public and private), staff, volunteers, and fosterers.

However, despite a slight decrease in incoming animals (-2,815) compared to the previous year, we faced a new challenge. The length of stay for animals in our Centres increased, a symptom of the cost-of-living crisis which led to fewer adoptions. This economic pressure has significantly impacted the speed of rehoming, reducing our capacity to take in new animals.

Certain regions, however, experienced increases, particularly in the intake of cats and puppies, highlighting the ongoing need for our services and localised support.

Despite these challenges, our team remains committed to ensuring every animal that comes through our doors receives the care and attention they deserve, supported by fosterers and thousands of volunteers. Our teams across the country provided shelter, medical care, and found new homes for thousands of animals.

To help us find forever homes for animals in our Centres we run adoption campaigns.

Throughout the year, SPCA has conducted several adoption campaigns aimed at easing the capacity at our Centres and finding forever homes for our animals.

These campaigns have been strategically timed to coincide with busy periods, such as kitten season and school holidays, to maximise their impact.

By creating awareness that all animals being adopted are already desexed, microchipped, and vaccinated, these campaigns have successfully encouraged more adoptions. This helps ensure SPCA's objective of long-term control of companion animal numbers and provides loving homes for many animals.

Our adoption campaigns have included special events like open days and nationwide promotions, allowing the public to meet and connect with animals in need of homes. These efforts have significantly contributed to finding forever homes for 16,071 of animals, ensuring they receive the care and love they deserve.

There were many adoption success stories linked to the adoption campaigns, like Kanda's.

“The dedication of our team and the support from our community and donors are the reason we achieved these milestones. Every adoption and every rescue are a testament to our collective effort.” - Todd Westwood, SPCA CEO

Rescued to rehomed: Kanda's story

Donna found a sick, scared kitten in a car park on her way to work. After hours of trying, she managed to catch him and brought him to SPCA Masterton Centre. She named him Kanda, after the rest home where she found him.

Kanda was in terrible condition, suffering from severe ringworm, mange, and other health issues. Our SPCA team provided intensive care, including regular medicated baths. Despite his initial fear, Kanda grew to enjoy being wrapped in a warm towel after his treatments. Donna visited him weekly, forming a strong bond.

Donna decided to adopt Kanda, and under her care, he thrived. Now healthy and confident, Kanda even



visited the rest home where he was found, becoming a beloved figure among the residents. He enjoyed exploring his new home and playing with his new best friend, Sean the dog. Donna expressed her gratitude to SPCA for their efforts in saving Kanda, who is now happy and thriving.

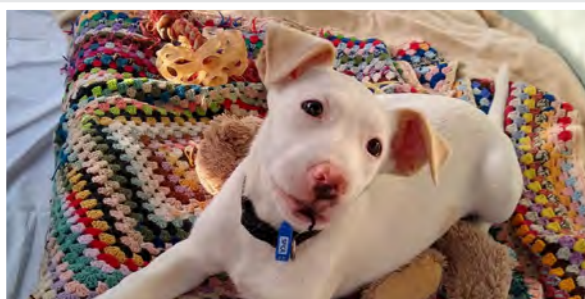
The foster family of SPCA

Foster families contribute to our mission, offering temporary homes and care to animals in need.

At times, up to 40% of the animals in our care are with foster families in the community. Without them, far fewer animals would be helped. We continue to be extremely grateful for their support. Fosterers provide a safe and nurturing environment for animals, helping them recover, adapt to life as part of a household and prepare for adoption. We continue to recruit fosterers throughout the year, peaking in kitten season. In response to a 47% increase in kitten intake in September 2023 compared to the previous year, SPCA urgently sought summer foster volunteers. This increase, combined with a slowdown in dog adoptions, pushed many of our 28 Centres to capacity.

Dr. Corey Regnerus-Kell, SPCA's General Manager of Animal Services, used every opportunity throughout the year to communicate the importance of temporary foster homes to free up space for more vulnerable animals, including the East Coast flooding events to build capacity for care.

Foster care is vital for the recovery and socialisation of our animals, offering a calmer environment than the Centres. With SPCA covering all fostering costs, including food, bedding, toys, and veterinary care, it can also be an ideal opportunity for a family to include a pet, temporarily, without all the associated costs.



Kahi's Story

Kahi, a guide dog for a blind and deaf dog, found a loving foster home that provided the special care he needed. His journey was featured on Seven Sharp, highlighting the incredible bond between Kahi and his foster family.

Q&A with rabbit foster mum, SPCA Ambassador Honor Carter

Honor Carter's nine year old son had always wanted a rabbit. To test the waters, they decided to foster rabbits through SPCA programme.

Boogie, a young male, was their first foster in February. He was later adopted permanently. Their second rabbit, Maple, joined them in June and was also adopted after a successful bonding process with Boogie. They also took in a Flemish Giant, but he was only a temporary foster.

Honor said there were some challenges, loads of rewards, and a few surprises. They discovered the social and intelligent nature of rabbits. The kids, especially the nine year old, actively participated in caring for the rabbits. It was time-consuming but rewarding, as it made the rabbits happier and more confident.

Honor's advice for new foster parents:

- **Commitment:** Rabbits require significant time and effort.
- **Children's Role:** Parents often end up doing most of the work.



"Fostering has been a rewarding experience. Seeing the transformation in these animals and knowing we played a part in their journey to a forever home is truly heartwarming."

- Honor Carter, Foster Mum

Collaboration

Our success in making care possible was a result of collaboration and dedication.

The support from our communities, volunteers, fosterers, veterinary affiliates, and generous donors was instrumental in achieving our goals. Collectively, we've created a brighter future for thousands of animals across New Zealand.



Alex's journey – working together.

When SPCA Inspectors first met Alex, he was in a dire state, weighing half of what he should and unable to stand. Despite his condition, Alex showed a glimmer of hope with a wagging tail. Rushed into SPCA's care, he received immediate medical attention and began a long road to recovery.

Alex's rehabilitation included specialised physio and constant care. He thrived under the love and attention of the vet team and his foster family. Over time, Alex regained his strength, learned to trust again, and found joy in everyday activities.

Today, Alex is a testament to resilience and the power of compassion. His story highlights the critical work of SPCA, working with our communities to rescue and rehabilitate animals in need.

Alongside the veterinary profession



Our partnership with vets continues to be fundamental in providing essential medical care to the animals. Through collaborations with veterinary clinics, we were able to offer surgeries, treatments, and other essential care and support for the animals in our care.

"Desexing is the only way to significantly improve animal welfare long-term in this region and encourage responsible pet ownership." - Dr. Jorrit Verver

Bay of Islands veterinary services

This partnership resulted in the desexing of 1,565 animals in one fiscal year. Dr. Jorrit Verver, Director of Bay of Islands veterinary clinic, shared his experience: "In the last 12 months, we desexed close to 2,000 animals thanks to SPCA. We started seeing improvements in the geographic areas targeted with this project. There is still lots of work to be done, but this project is making an impact."



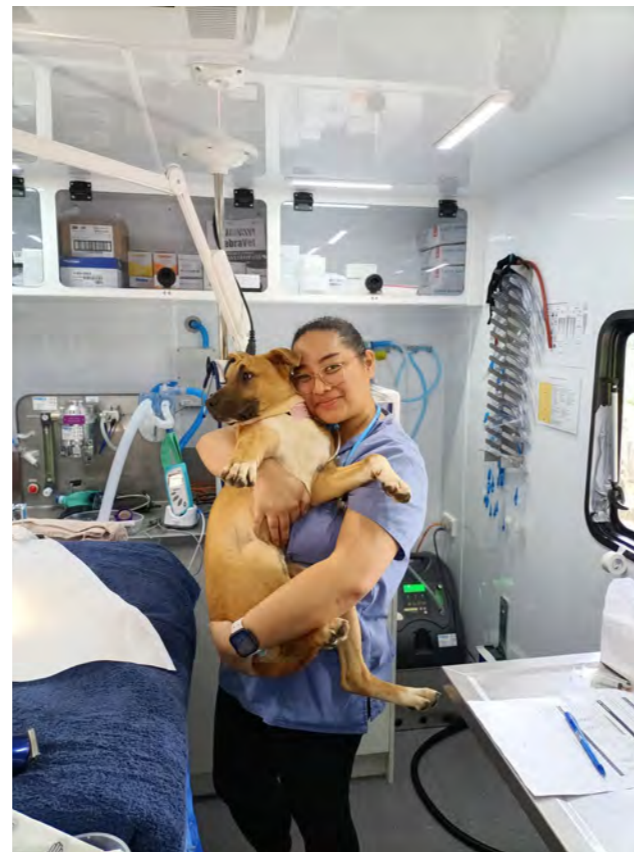
Desexing to curb the cycle of neglect

Our desexing programmes have been successful in reducing the cycle of neglect and improving animal welfare.

Snip 'n' Chip is one of our ongoing desexing initiatives for cats, offering cat owners in targeted communities the chance to desex their pets for a fraction of the standard cost. We provide vouchers that cat owners can take to one of our participating vet clinics, who will then carry out the desexing surgery and microchipping. Since our campaign began, we have desexed a total of 21,258 cats through our Snip 'n' Chip campaigns, preventing an estimated 85,032 unwanted kittens from being born.

We also exceeded ambitious targets of 30,000 procedures in our two-year desexing campaign with 36,227 animals being desexed, preventing an estimated 135,873 unwanted animals being born. And launched a new Mobile Desexing Clinic, which can reach more remote areas without access to veterinary services to address pet overpopulation.

These efforts made an impact, as evidenced by the positive feedback and stories of animals benefiting from the programmes. For instance, the collaboration with Bay of Islands veterinary services resulted in the desexing, microchipping, and vaccination of 789 dogs and 776 cats in the last financial year. This partnership, along with others, has significantly contributed to improving animal welfare outcomes.



DESEXING ACTIVITY

2023 -2024 numbers

7,202 Snip 'n' Chip

6,985 Community desexing

609 Mobile desexing

1,902 Vet partnerships

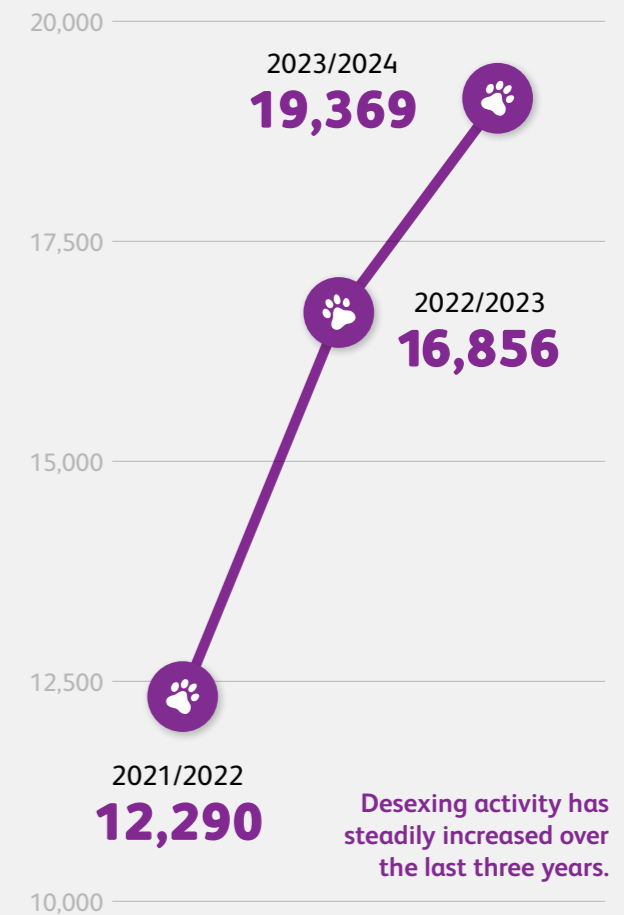
2,022 Rescue group support

649 Other types of desexing



Three-year desexing activity

We are very grateful to the hard-working and dedicated vets, vet nurses, and support staff across all the vet clinics that have supported SPCA's desexing campaigns and programme.



Desexing activity has steadily increased over the last three years.

03 Making Animal Voices Heard



Role of Inspectorate

Addressing animal welfare in New Zealand remains a significant challenge, often overwhelming due to the complex issues contributing to overpopulation and suffering.

SPCA's commitment to animal welfare drives collaborative efforts with various agencies, including local councils, national welfare bodies, Government entities, and rescue groups. We acknowledge and appreciate the valuable work done by rescues in rehabilitating and rehoming animals – and adding to the much-needed animal voice demanding change.

However, as a law enforcement agency under the Animal Welfare Act 1999, our role differs significantly from other rescue agencies. While sharing a goal of a better future for animals, our legal obligations shape our actions, including confidential investigative work due to legal and privacy constraints.

We strive to support rescue groups through grants, desexing initiatives, and shared advocacy, recognising that both our roles contribute to a compassionate society. We are proud of our contributions and hope for continued collaboration, building on shared goals while respecting our differences.

The role of SPCA Inspectors as enforcers of the Animal Welfare Act is necessary, but very challenging. These dedicated individuals are on the front lines, protecting and advocating for the well-being of animals in our society.

SPCA Inspectors navigate difficult and emotionally charged situations, seeing the suffering inflicted upon innocent animals. Their role extends beyond enforcing the law; it includes education, community assistance and a commitment to upholding the rights and welfare of animals.

In the last financial year, we received a total of 13,972 animal welfare reports, covering more than 20 different species. Several of these cases were resolved without going to court. We filed 63 prosecution charges in court. Several prosecutions were concluded, resulting in 32 convictions, with additional cases still pending.

The team cares about every animal they encounter, ensuring they receive the best possible care and protection. Our comprehensive approach includes the use of legal tools and education to address the unique complexities of each case.

Education is an important part of our work that our SPCA Inspectors do – improving public understanding

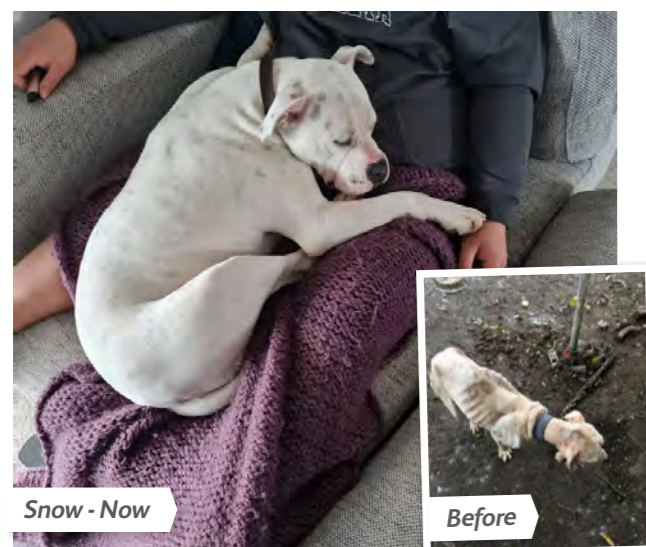
about responsible pet ownership and animal welfare. Through workshops, community outreach, and awareness campaigns, we want to improve the lives of animals by creating a culture of care and respect.

SPCA Inspectors face a range of challenges in their work, including:

- Witnessing the suffering of animals - Inspectors often encounter distressing situations that can take a significant emotional toll.
- Dealing with individuals who have mistreated animals can sometimes lead to confrontational and potentially dangerous situations.
- Navigating the legal system to ensure that perpetrators of animal abuse are held accountable can be complex and time-consuming.
- Educating the public about animal welfare and responsible pet ownership is an ongoing challenge. Changing long-standing attitudes and behaviours requires consistent effort.
- Inspectors often cover large areas within New Zealand, which can make it difficult to respond quickly to reports of animal welfare issues.

Despite these challenges, SPCA Inspectorate team remains dedicated to protecting and improving the lives of animals. Thank you to the community that supports this work, and for recognising the role Inspectors have in creating better outcomes for animals. The following case studies help to understand the impact of their work in the community.





Addressing animal neglect and abuse

These heart-wrenching cases of neglect and abuse highlight the critical role of SPCA in rescuing and rehabilitating animals. Snow, a white mixed-breed dog, endured months of severe neglect and abuse, chained in a small, filthy area. The owner was sentenced to 150 hours of community work and received a 10-year ban on owning companion animals and a male was given 140 hours of community work and a five year ban. SPCA provided emergency veterinary care and nursed Snow back to health. Snow's story ended happily with her adoption into a loving family.

Similarly, a pregnant mare suffered from severe neglect on her owner's property. Despite multiple visits and initial agreements to improve her care, her condition worsened, leading to SPCA intervention. The situation escalated when the owner assaulted an SPCA Inspector, resulting in his arrest. The mare, emaciated and suffering from severe rain scald, was eventually rescued and received the necessary care. The court sentenced the man at the Taumarunui District Court, banning him from owning more horses. Additionally, he was ordered to pay reparations for the veterinary costs incurred.

In another case, Mister, a white terrier breed dog, suffered awful abuse at the hands of his owner. After being discovered tethered and immobile with



severe injuries, Mister received extensive care from SPCA and made a full recovery. He was later adopted into a new, loving home. The court sentenced the owner to community detention and supervision, and she was disqualified from owning dogs for three years. Additionally, she was ordered to pay reparations.

Maisie, a beloved black Labrador cross dog, was entrusted to Pet Dog School Limited for boarding. The business owner, responsible for transporting the dogs, left Maisie in a parked car with the windows up. Tragically, Maisie was forgotten in the vehicle for over eight hours on a sunny day. Despite the presence of staff, Maisie remained unnoticed until the owner discovered her lifeless body in the late afternoon. A postmortem revealed that Maisie had suffered from severe heat stroke, leading to her death. The internal temperature of her body exceeded 43 degrees Celsius, indicating prolonged suffering.

The Whanganui District Court sentenced Pet Dog School Limited to a \$7,000 fine, and ordered \$4,177 in reparations to Maisie's owners.

This incident highlights the absolute importance of never leaving pets unattended in vehicles, especially in warm weather and the need to advocate for animal welfare. There is urgent need for legislative changes to prevent such neglect and abuse, ensuring that all animals receive the care and respect they deserve.

Role of advocacy

Advocacy is an important part of our work at SPCA, where we aim to protect and improve the lives of animals through legislative change.

Our Science Team works on a range of advocacy topics including mandatory desexing of cats, chained dogs, Companion Animal Codes of Welfare, a ban on greyhound racing, and protecting the ban on live exports by sea. More information is available on our advocacy page on SPCA website - <https://www.sPCA.nz/advocacy>.

By advocating for stronger laws and regulations, we can help address animal cruelty, neglect, and improve animal welfare. Our activity involves behind-the-scenes

work by our Animal Welfare Scientists, who review the latest evidence and make recommendations to Members of Parliament, politicians, Government advisory groups, industry stakeholders and committees.

Our Vision is - a world where all animals are treated with respect and kindness. Supported by the public, who share our vision of a compassionate world for animals, we believe in the power of collective action to create lasting change. For more details and to get involved, visit our advocacy page (<https://www.sPCA.nz/advocacy>).



Break the Chain for dogs

Thousands of dogs in New Zealand spend their lives on the end of a chain or in a cage, and the law currently means we cannot act as much as we would like to. Last year, we came very close to achieving legislation that could end life chaining for many dogs before the election and we continued our efforts post-election. In 2022 over 20,000 people joined our campaign, pushing for legislative changes. The Government moved forward with public consultations in 2023, and we have written to both MPI and the Minister of Animal Welfare to call for this legislation to progress. We met with the Minister in June to discuss the regulations and have provided more information at the Minister's request to push for dog tethering regulations to come into force, giving us more tools to protect these dogs.



Protecting the ban on live exports

In April 2023, we celebrated the banning of live exports of farmed animals for both slaughter and breeding - New Zealand led the world in this. We are now faced with a Government proposal to repeal the ban on live exports. This move would condemn hundreds of thousands of animals to suffer. We've been actively campaigning to defend the ban, rallying public support. In the second quarter of 2024, more than 57,000

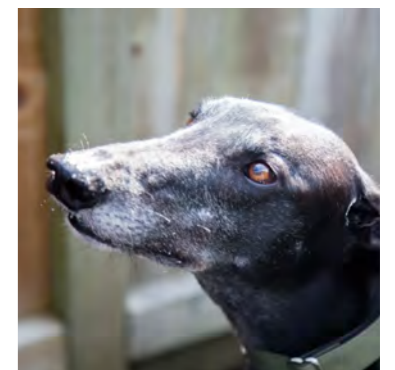
New Zealanders signed a petition to protect the ban, highlighting widespread opposition. At the petition handover event at Parliament, Labour and Greens announced they would reinstate the ban, should the current Government overturn it, sending a clear message to those looking to profit from live exports. We believe maintaining the ban on live exports is critical for animal welfare and will continue to advocate against any attempts to repeal the ban.

Updating Codes of Welfare

We've been proactive in revising outdated (almost 15 to 20 years old) Companion Animal Codes of Welfare. Codes of Welfare provide clear guidance to the people responsible for animals on how to meet their welfare needs and also assist animal welfare Inspectors to enforce the Animal Welfare Act. Some species, such as rabbits (one of the most popular pets in New Zealand) do not have a code of welfare. In this financial year, SPCA presented updated draft Codes of Welfare for cats and dogs to the National Animal Welfare Advisory Council (NAWAC) in late 2023 this work was paused by the Minister of Animal Welfare mid-2024.

Ending Greyhound Racing

Our stance against commercial greyhound racing remains strong. Following our 2022 campaign, which showed 74% of New Zealanders support ending this industry, we've kept the pressure on policymakers. We're hopeful for a decision to end greyhound racing, ensuring a smooth transition for rehoming these dogs.



SPCA Certified® – driving change

Our SPCA Certified® sets high standards for animal welfare, going beyond minimum legal requirements.



The programme covers both the farming and pet care sectors, making sure animals receive the best possible care. This year, we welcomed new members raising the bar for animal welfare across New Zealand.

Farmed animals make up the largest population of animals in New Zealand and globally, facing significant welfare challenges. Humane farming certification programmes are essential for improving their daily lives and driving meaningful change for animal welfare.

SPCA launched its first animal welfare certification programme, SPCA Blue Tick, 23 years ago. In 2020, it was rebranded as SPCA Certified, reflecting the inclusion of ‘animals as sentient beings’ in the amended Animal Welfare Act (1999) with the standards framework derived from the Five Domains Model of Animal Welfare. This model recognises animals’ emotional needs, acknowledging that welfare can be both positive and negative and that an animal’s emotional needs are equally important as their physical needs.



We welcomed:

- **Central Bark:**
Certifying a doggy daycare
- **Better Eggs:**
Certifying free range and barn layer hen farms
- **Ingham’s:**
100 % SPCA Certified with free range and barn raised meat chickens

The five domains model of animal welfare:

- **Nutrition:** Access to proper food and water.
- **Environment:** Suitable living spaces with shelter and comfort.
- **Health:** Good health through disease prevention, veterinary care, and injury management.
- **Behaviour:** Freedom to express natural behaviours like socialising, exercising, and mental engagement.
- **Mental State:** Ensuring overall mental wellness by fostering positive emotions.

SPCA Certified standards exceed legal requirements, raising the bar for animal welfare in farming and pet care. With 14 members across 100+ facilities audited at least biannually, last year saw over 55 million animals benefit from these standards.

For example, under SPCA Certified meat chicken standards there are 175 criteria that must be met.

SPCA Certified® standards:

- Above the minimum standard required in current codes of welfare.
- Reviewed every three years.
- Independently audited – both scheduled and unannounced, with meat chicken farms audited 4 x year and other species 2 x year. SPCA Certified staff also visit all farms.
- Developed by SPCA Science team with input from veterinarians, pet care professionals, and technical specialists.
- Implemented following extensive stakeholder, industry and member consultation.



Ingham’s chicken

Ingham’s achieved a milestone by ensuring that 100 % of their meat chickens are now SPCA Certified. This certification means that all the chickens are raised under stringent welfare standards that go beyond the minimum legal requirements. SPCA Certified programme mandates that chickens have access to perching platforms, allowing them to roost and feel secure from predators. Additionally, the chickens are provided with more space to engage in natural behaviours such as wing flapping, foraging, and dust bathing. This commitment to higher welfare standards improves the quality of life for the chickens and also

sets a benchmark for the poultry industry in New Zealand. Ingham’s dedication to animal welfare reflects a growing consumer demand for a higher standard of animal care on farms, and their participation in SPCA Certified programme demonstrates their leadership in promoting improved farming practices. This commitment has been recognised by their peers as Ingham’s were finalists in the Excellence in FMCG Strategy at this year’s NZ Marketing Awards for ‘Raising the Bar on Animal Welfare.’

Thank you to our members, independent auditors, SPCA Certified Team, partners, and consumers of SPCA Certified products. Your support has elevated animal welfare across New Zealand this past year.



Making change through education

Children are the future guardians of animal welfare. Our SPCA Education Programme offers engaging resources that align with New Zealand’s education curriculums.

Our SPCA Education programme was developed to increase children’s knowledge and understanding of animal welfare, and foster positive relationships, attitudes and behaviour towards animals. Our collaboration with EUGY (sustainable paper craft toys made from cardboard) has helped to further increase awareness of SPCA among children - a community of young advocates for animal welfare.

Our Education Programme offers a variety of tools to help children understand and engage with animal welfare. Through our dedicated website, kids can access interactive games, videos, webinars, download activity books, read our kids’ newsletter, and enter our latest competitions. The content covers a range of topics, from understanding animal behaviours to kind conservation. These resources are designed to develop children’s knowledge and understanding of animal welfare, whilst nurturing their feelings of empathy and compassion for our living world.

- **Impact highlights:** 1,282 schools (5 - 12 years) using SPCA teachers’ portal
- **Storybooks for learners:** Available in six different languages, audio book files, and in accessible formats for learners who are blind or have low vision, over 300,000 SPCA storybooks are currently circulating within New Zealand primary schools. Helping children to learn wherever they are. Our ongoing series of animal welfare webinars have allowed our Education Team to deliver live, face-to-face learning experiences, accessible to all children throughout New Zealand regardless of their postcode.



SPCA Kids and Dodoland

SPCA Kids and Dodoland collaborated to design an SPCA Kids’ EUGY, a sustainable paper craft toy, to spread awareness of SPCA’s work, the importance of enrichment, and responsible animal guardianship. The Hope EUGY, inspired by the real-life story of an SPCA dog named Pumba, helps young people build empathy and compassion towards animals. This model symbolises second chances for all animals cared for by SPCA and celebrates Pumba’s journey from abandonment to adoption. Additionally, 10% of the net sales profit from SPCA Dog EUGY sold in New Zealand, Australia, and online is donated to SPCA.

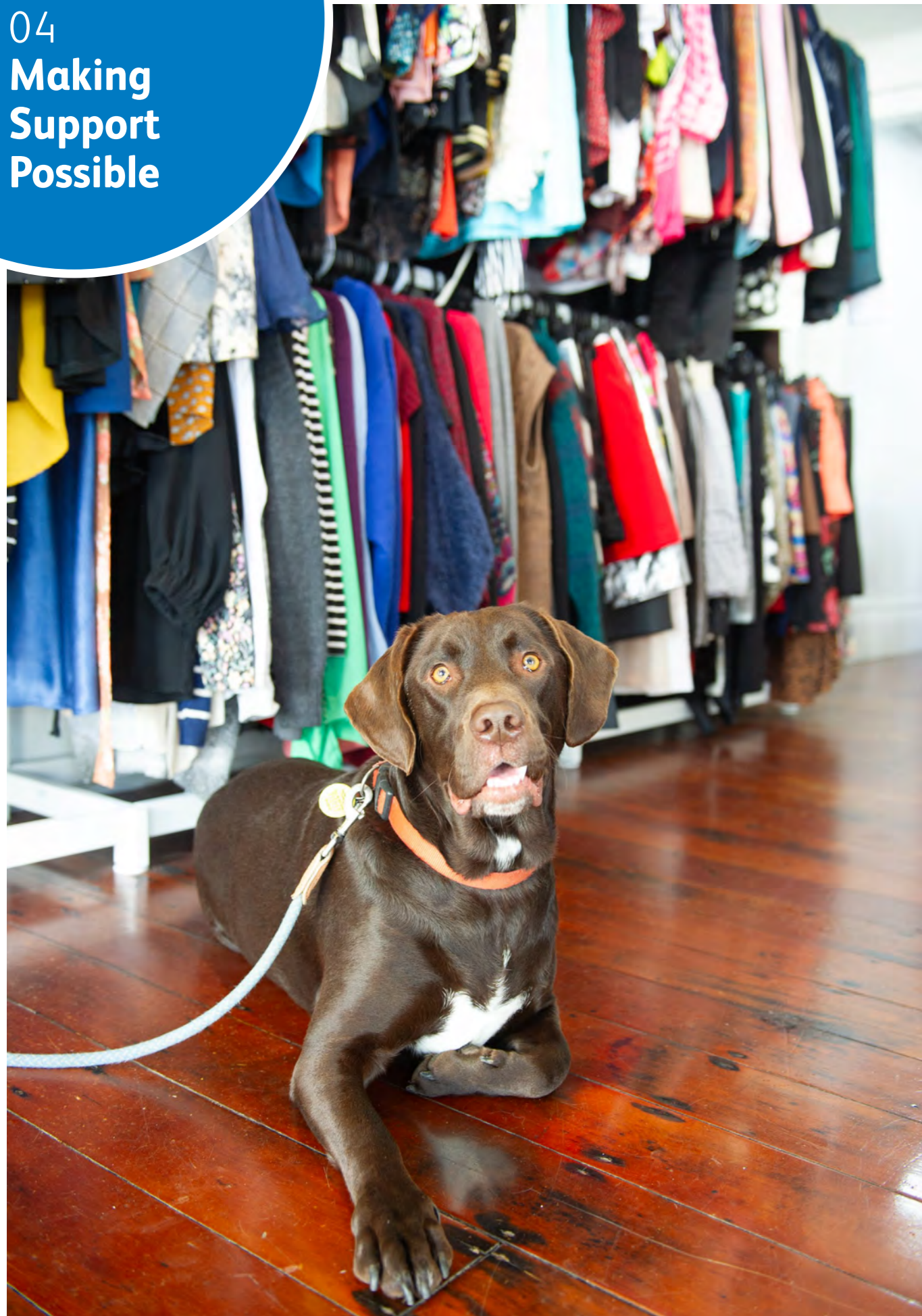
- **SPCA Kids and EUGY - Working together to give animals a better life:** This collaboration has increased awareness and engagement among children, fostering a community of young advocates for animal welfare.

Supporting teachers:

From understanding the sentient nature of animals through to elements of care, from big ideas to basic ideas, teachers are often keen to share how their learners have benefitted from the education programme, the positive differences it had made to them, their learners, and to some of the animals they interacted with.

“I just remember that they had to come from Kiribati, and they had no experience [with pets]. I just remember the kind of awe of reading the books and the engagement of the conversation. I still remember the impact of that learning for them. Reading about animals breaks down barriers.” - NZ Primary School Teacher

04 Making Support Possible



Op Shops: Raising funds to make caring for animals possible

Our community-supported Op Shops provide SPCA with financial support through generous public donations of items they no longer need, which we then sell. Our Op Shops offer a sustainable and affordable shopping experience for others — all in support of the SPCA's work to help animals.

With growing awareness of sustainability and a desire to support meaningful causes, our Op Shops have captured the hearts of many who are passionate about animal welfare.

In the past year, SPCA has continued to expand and optimise our Op Shop network. We proudly opened 11 new shops and relocated two to locations with greater foot traffic, bringing our total to an impressive 85 shops nationwide, from Kaitaia to Invercargill. This growth demonstrates the success and strategic expansion and optimisation of our Op Shops, essential for sustaining and increasing support.

Despite traditional fundraising challenges and economic uncertainties, our Op Shops have provided a stable source of income for SPCA. This income is absolutely critical in allowing SPCA to continue to operate. With only around 10% Government funding, we rely heavily on the funds raised through our Op Shop network to continue our important work supporting and protecting animals in need.

Central to our success is our focus on providing a positive customer experience. We have prioritised improving service standards and enhancing visual merchandising, making our shops a preferred destination for affordable and sustainable shopping.

Our dedicated staff, volunteers, and donors have transformed these shops into places for treasure seekers, unique fashion stylists and conscious consumers. We are grateful to all the volunteers who help us operate our stores, and to our community of supporters — those who donate items and those who shop with a purpose. You have made a significant difference in the lives of countless animals.

Financial impact

The impact of fundraising from our Op Shops grows each year. In the past year, the shops have contributed

more than \$2.7 million to support our animal welfare efforts.

Community Support

The success of our Op Shops is thanks to the community's involvement. We acknowledge our customers, donors, and volunteers:

- **Volunteers:** Are critical to ensuring we deliver a high standard of customer experience working alongside a staff member.
- **Donors:** Their generosity provides the range of items we sell.
- **Shoppers:** Their purchases fund our work.

Our Op Shops play a big role in recycling and repurposing donated items, reducing environmental impact. Volunteers often recondition, repair, repurpose through crafting or handmade items like baby clothes, pet accessories, candles and doll clothes — thank you to our Op Shop volunteers, your generous contributions have made a significant impact on the lives of countless animals.



Dedicated donors

Thanking donors, grant funders, fundraisers, and those who leave legacies



Your support in action

Your contributions have enabled us to rescue, rehabilitate, and give countless animals a second chance. Thanks to your donations, we can respond quickly during natural disasters, providing immediate relief to vulnerable animals. Your support also allows us to invest in the future of animal welfare through educational programs, desexing initiatives, advocacy for stronger laws, and community education on responsible pet ownership. We are grateful to our donors and funders, whose support has made our essential work possible throughout the year.

Impact of your donations

Your generosity has allowed us to:

- **Rescue and rehabilitate:** thousands of animals have been saved from bad situations and given a new start.
- **Emergency response:** during natural disasters, your donations have enabled us to act swiftly, providing immediate care to affected animals.
- **Educational initiatives:** we've run numerous programs to raise awareness about animal welfare and responsible pet ownership.
- **Advocacy:** your support has strengthened our efforts to push for stronger animal welfare laws, ensuring better protection for animals nationwide.

SPCA is the only charity with the legal authority to investigate cruelty and bring offenders to justice. Government funding covers about 40% of the cost to run our Inspectorate. We are reliant on donations to fund the remaining 60%.

With 90% of our total SPCA annual operating costs dependent on donations, our 150-plus years of service have been made possible through the collective compassion and commitment of our communities.

Government funding

This year, the Government contributed \$6.6million to our organisation, specifically to help support SPCA Inspectorate Services. This amount is 10% of the total annual operating costs of SPCA.

Thanks to the Government's contributions, we have been able to achieve significant milestones:

- **63 prosecution charges filed.**



Income:



- Fundraising and Legacies
- Op Shops
- Certified
- Pet Adoptions and Services
- Government Funding
- Investments

Operating Expenses:



- Animal Services
- Property Expenses
- Desexing
- Engagement
- Inspectorate
- Social Enterprises
- Advocacy

Finance Summary for Period Ended 30 June 2024

Giving Hearts members

We want to acknowledge a very special group of generous people - our SPCA Giving Hearts members.

These are compassionate animal lovers who have made the incredible act of kindness of leaving a gift in their Will to SPCA. Like Sheryl Glasse, whose love of animals will continue to make a positive impact for many years to come.

Sheryl has been involved with SPCA's work for more than 30 years. As an SPCA Giving Hearts member, Sheryl has made the generous decision to leave a gift in their Will to SPCA. We asked what prompted them to make this commitment:

"I have always supported SPCA, my mother and I both love cats. I'm unable to give as much as I would like but you are always in my Will. I enjoy your calendars and birthday card; your card was the only one I got, and I put it up in my mother's room so she could see the beautiful cat picture. Thank you for all the incredible work you do the animals."

From the bottom of our hearts, thank you for being the driving force behind our work and standing with us in our commitment to creating a world where all animals are treated with the compassion and care they truly deserve.



"I'm leaving a legacy to SPCA in my will to support the animals. My family loves cats, and we've had many rescues. My mother, who is now in dementia care, once gifted me a black cat from SPCA who lived 22 years. I trust the funds will provide shelter for the animals."

Grant funders and trusts

In 2023-24 the following grant funders, charitable estates and trusts have generously supported SPCA. We would like to acknowledge and thank these organisations for helping make our work possible throughout the year.

AD Hally Trust, managed by Perpetual Guardian
 Air Rescue Services Limited
 ANZ Staff Foundation
 Aotearoa Gaming Trust
 Auckland City Council
 BlueSky Community Trust
 Brian Whiteacre Charitable Trust, managed by Public Trust
 Carterton District Council
 Community Trust South
 Companion Animals NZ Trust
 Danesmead Community Trust, managed by Public Trust
 Dr Marjorie Barclay Trust
 Dragon Community Trust
 Dunedin City Council
 Elaine Gurr Endowment Trust, managed by Perpetual Guardian
 Estate of Gordon Lindsey Isaacs, managed by Perpetual Guardian
 Four Winds Foundation
 Gallagher Charitable Trust
 George Brown Charitable Trust, managed by Public Trust
 Grassroots Trust Central
 Grey District Council
 Hamilton City Council
 Hilda Curtis Charitable Trust, managed by Public Trust
 Hutt Mana Charitable trust
 Invercargill Licensing Foundation
 Joyce Fisher Charitable Trust
 Kiwi Gaming Foundation
 Lake Memorial Charitable Trust, managed by Perpetual Guardian
 Lottery Minister’s Discretionary Fund

Mainland Foundation
 Margaret Olive Russell Charitable Trust, managed by Perpetual Guardian
 Masterton District Council
 Nelson City Council
 New Zealand Community Trust
 Nikau Foundation
 North and South Trust
 Northland Community Foundation
 One Foundation
 Otago Community Trust
 Otorohanga Charitable Trust
 Palmerston North District Council
 Pamela Webb Charitable Trust, managed by Perpetual Guardian
 Pelorus Trust
 Queenstown Lakes District Council
 Rano Community Trust
 Redwood Trust
 Room-Simmonds Charitable Trust, managed by Perpetual Guardian
 Roy Owen Dixie Charitable Trust, managed by Public Trust

Simplicity Foundation
 South Canterbury Trusts, managed by Perpetual Guardian
 South Wairarapa District Council
 Taupo District Council
 The Lion Foundation
 The Matheson Animal Trust, managed by Public Trust
 The Reed Charitable Trust, managed by Public Trust
 The Sunrise Foundation
 The Trusts Community Foundation
 Toi Foundation
 Trillian Trust
 Trust Horizon
 Trust House Foundation
 We Care Community Trust
 West Coast Community Trust
 Whakatāne District Council
 Whangarei Distict Council
 William Downie Stewart Charitable Trust
 Zelda Roberts Charitable Trust, managed by Public Trust



Partners and sponsors

We collaborate with generous and innovative businesses that support SPCA in numerous ways. They back us by raising awareness, supporting our team, and funding our work.



Nestle Purina believe pets and people are better together and are committed to helping SPCA with animal care and welfare. That care starts with the right nutrition, and this is why the cats and dogs of SPCA are fed the premium nutrition of Purina ONE. Nestle Purina donates over 100,000kgs of Purina ONE as well as its more specialty care pet food for those animals that need to be on special diets, to SPCA each year. Nestle Purina also donate a large number of gift hampers to SPCA staff, volunteers and winners of competitions each year. Thank you for your continuing support, Nestle Purina.



SPCA Pet Insurance is a pet insurance brand committed to helping pet owners build a stronger bond with their pets by providing pet insurance to help cover some of the cost of vet bills. SPCA Pet Insurance is an official partner of SPCA, which means by purchasing a policy through SPCA Pet Insurance, you’re supporting the great work of SPCA. At SPCA Pet Insurance, they believe happy pets make happy owners. That’s why they’re all about letting you say ‘Yes’ to your pet more often. Yes, to that run in the park, ‘Yes’ to the exciting car ride, and ‘Yes’ to the best possible medical care for your cat or dog, without worrying about the cost.



Minter Ellison Rudd Watts is a leading full-service law firm and continues to proudly support SPCA by providing pro bono, and subsidised legal advice. Through their Community Investment Programme, they support grassroots and community organisations of Aotearoa New Zealand. The team believes that by using collective skills, time and resources they are able to make a positive impact for people, communities and our planet.



Ezeco donates to SPCA from every Ezecbag poo bag and Ezeleash purchase made in-store and through their website. Ezeco has been a long-term supporter of SPCA.



OPPO New Zealand is proud to be the official smartphone provider of SPCA, helping the staff of SPCA carry out their incredibly important jobs within the community using OPPO smartphones, accessories and services. Oppo New Zealand also donated a number of its much-loved devices and accessories to winners of our Pets of the Year calendar competition.



The Coffee Club has been working with SPCA on selected events and campaigns for a number of years, and this year helped SPCA raise much needed funds by being part of our Matched Giving campaign – matching donations made from members of the public.

Event Sponsors

We are fortunate to have the support of a range of businesses in New Zealand who contribute to particular fundraising events.



Business Supporters

If you see this logo on a kiwi business’s website – this means that they generously donate a percentage of their profits to SPCA. We thank our community of Business Supporters across Aotearoa for continuing to give to SPCA.

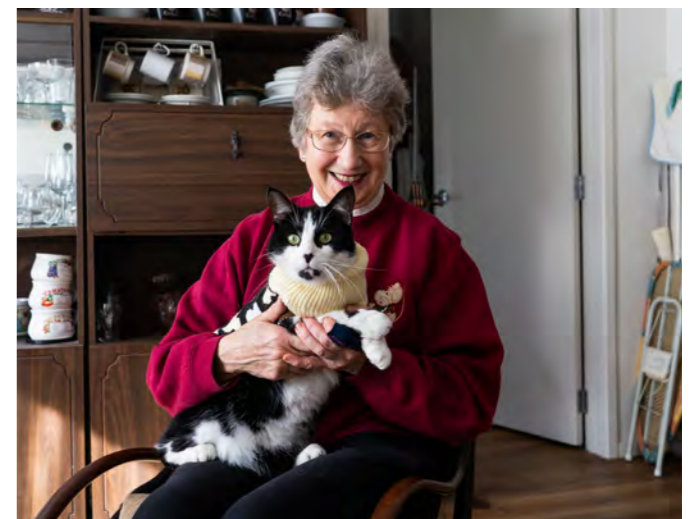


Legacies - Supporting SPCA

We want to acknowledge the generosity of those who left a gift to SPCA in their Will during 2023-24. These contributions Will have a lasting impact on the welfare of New Zealand’s animals for generations to come.

- | | | | |
|--------------------------|------------------|-----------------|-----------------------------------|
| Adrian Kerr | Betty Bigham | David Evitt | Elizabeth “Liz” Jamieson-Hastings |
| Ailsa McCarlie | Betty Mercer | David Irvine | Elizabeth Hammond |
| Alexander Jenkins | Beverley Friend | David Tompkins | Elsie Cain |
| Alfred Muldoon | Beverley Gaddis | Denis Lander | Elva McNamara |
| Alisa Telford | Beverley Jones | Derek Watson | Elza Peckham |
| Alison Jones | Billie McLeod | Derrick Hallett | Erica Anderson |
| Alison MacKay | Brenda Waring | Diane Davies | Faye Taylor |
| Alistair Crozier | Brian Galvin | Donald Smart | Faye van Tilburg |
| Ann Bourke | Caroline Hodgson | Doreen Anderson | Frank Holmes |
| Ann Day | Caroline Kite | Dorothy Brand | Frank van Brucken |
| Anne Weir | Charles King | Dorothy Osborne | George Drury |
| Arthur Everett | Christine Beard | Dorothy Warner | George Dunn |
| Audrey MacIlwaine | Christine Yard | Douglas Wheeler | George Vincent |
| Barbara Plum | Christne Ager | Edwin Gifford | Gerald Baker |
| Barbara Somerville-Hales | Clive Feltham | Edwina Grant | Gerlinde Gregory |
| Bernard Clews | Cyril Smith | Eileen Bell | Gilbert Nash |
| Bernard Moss | David Ashton | Elaine Barrett | Gillian Martin |
| Beryl Maltby | David Clare | Elaine Whiting | Giovanni Zampese |
| Betty Allen | David Elcock | Elisabeth Ryan | |

- | | | | |
|------------------------|---------------------|------------------------------|------------------------|
| Gladys Smith | Juliet Eden | Nola Knaggs | Rosanne Ziems |
| Gloria Bright | June Robbins-Finch | Owen Bell | Rosemarie Ashton |
| Gloria Driscoll | Karen Beattie | Pamela Boshier | Rosemary Smith |
| Grace Murphy | Karen Persson | Pamela Bostock | Roy Milam |
| Gweneth Tofield | Kathleen Jackson | Pamela McCulloch | Ruth Batt |
| Hanna Hart | Kay Crofts | Pamela O’Neal | Ruth Hopkins |
| Hanna Stewart | Kenneth Deakin | Pamela Whiteley | Ruth Mitten |
| Hazel Brown | Kenneth Rush | Patricia “Karin” Reid-Martin | Sally Martin |
| Hazel Dixon | Kristine Nicol | Patricia Gordon | Sandra Audley |
| Helen Taylor | Kwan Yim Lai | Patricia Purdon | Shirley Douglas |
| Herrick Waylen | Lesley Smith | Patricia Stancombe | Shirley Dunn |
| Hilda “Elizabeth” Reid | Lily “Betty” Hooper | Paul Green | Shirley Hayes |
| Hilde Otley | Lily Hogg | Peggy Mortimer | Shirley Winn |
| Ian Robinson | Linda Clarke | Penelope Forsyth | Sidney Keating |
| Irene Argent | Linda Ripley | Peter Ireland | Stanley Elwin |
| Isobel Truman | Lorraine Arnold | Peter Lamont | Stephanie Hearsey |
| Ivy Godsiff | Lynette Soper | Peter Meehan | Stephen Wood |
| James “Jim” Martin | Maja Paterson | Peter Moore | Susan Ferguson |
| James Burnet | Malwina Schwieters | Peter Read | Sybil Anderson |
| Jamie Quinlivan | Marcia Couper | Peter Revell | Thomas Czebely |
| Janice Boddy | Margaret Green | Peter Robinson | Thomas Jones |
| Jean Duthie | Margaret Henwood | Phyllis Gallaher | Trevor Walton |
| Jean Taylor | Margaret Hollis | Phyllis Roughton | V Dostine |
| Jeffery Cool | Margaret Maney | Rainer Goltzsche | Valerie Boerner Adams |
| Jennifer Grant | Margaret McNickle | Rauru Beaumont | Valerie Heinz |
| Jennifer Wu | Margaret Oxnam | Richard Warburton | Vernon Booth |
| Jewel Brown | Margaret Queale | Robin Judge | Victoria Leighton |
| Jillian Quinlan | Marie “Joel” Davies | Robin Smith | Wayne Ayers |
| Jimmie Grant | Marie Croft | Robyn Austin | Wendy Remnant |
| Joan Ogden | Marilyn Glen | Roderick McGrath | William “Frank” French |
| Joan Rogers | Marjorie Smith | Rodney Blair | William Lees |
| John Cooper | Mary Barton | Roger Harrington | William Park |
| John Harding | Mary Bragg | Ronald Carter | William Sherrin |
| John Jackson | Mary Gillam | Ronald Rosser | William Traill |
| John King | Mary Lench | | |
| John Sarfati | Matthew Turton | | |
| John Simms | Maureen Hobbs | | |
| John Thorp | Mavis Evans | | |
| John Tinling | Maxwell Wilson | | |
| John Vinson | Melva Smits | | |
| Jon Drabble | Michael Harris | | |
| Joyce Tull | Michael Hart | | |
| Joyce Williams | Molly Bowler | | |
| Judith Costley | Nancy Price | | |
| Judith Senior | Nellie Moran | | |
| Julie Leslie | Ngaio Abbot | | |
| Julie Woods | Noeleen Neuburger | | |



05 Making it Possible Behind the Scenes



Our Team: The core of SPCA

Our team is the core of SPCA, devoted to supporting animals and supporting the people who volunteer, foster, adopt and care for them.

Every day, our team face challenging and often distressing situations, yet they approach these with resilience and compassion.

With around 800 individuals across the country, each person brings themselves to work to share their skills to help animals in need. From caring for animals on the frontlines to providing insights into animal welfare science, upholding the Animal Welfare Act, running education and fundraising campaigns, as well as fundraising for animals through our network of Op Shops, sharing our stories in search of donations and finding forever homes - every team embodies a commitment to animal welfare. Their dedication turns compassion into action – they are the reason SPCA is still here helping animals after 150 years.

Celebrating Long Service

This year, we want to celebrate the long service of our staff. We proudly acknowledge those who have reached significant milestones in their service to SPCA. For example, Rachelle Rogers has been dedicated to helping animals for over 25 years.

“In the late 90s, I began my journey with SPCA as a volunteer, driven by a passion for animal welfare. By 2002, I transitioned to a part-time role, working across various departments, predominantly as a Field Officer. My dedication led me to a full-time position as a Canine Attendant in 2007, and eventually, I became a Field Officer in 2010.

Fast forward to July this year, I embraced a new role as an Inspectorate Support Officer (ISO). This position allows me to assist Inspectors with animal welfare complaints and help pet owners with tasks like desexing and microchipping. Each day brings new challenges and opportunities, making my work both unpredictable and rewarding.

One of the most memorable moments in my career was with a dog named Cookie. After months of waiting for the right family, Cookie finally found his perfect match. Seeing him thrive in his new home was a heartwarming reminder of why I do what I do.

Balancing my emotional connection with the animals and my professional responsibilities has always been



a delicate act. Currently, I'm fostering a Quaker Parrot named Juju, who has been with me since 2016 and is now a cherished member of my family.

For those considering pet ownership, my advice is to do thorough research. Different animals and breeds have unique care requirements and costs. I often share a cost-effective pet food recipe with families to help ease the financial burden.

Looking ahead, I hope to continue my journey with SPCA, contributing to the welfare of New Zealand's animals. Reflecting on my more than 25 years with SPCA, I am proud of the impact we've made and look forward to many more years of service.”



Our volunteers: Celebrating their contribution

Our many thousands of volunteers in our animal Centres bring a diverse range of skills and passions, helping us achieve the best outcomes for animals.

Whether it's walking dogs, cleaning, feeding or providing a safe and nurturing environment, fostering - our volunteers do it all. Every act of kindness and service, big or small, makes a significant impact on the lives of the animals we care for.

Beyond animal care, our volunteers play a key role in running our Op Shops. They excel in retail, customer service, and creative displays, promoting sustainable and recycled solutions through thrift shopping. This raises essential funds and spreads awareness about responsible consumerism. We are also grateful to

those who offer their professional services, such as photography, capturing the essence of our work and the animals we look after.

To all our volunteers, a very big thank you. Your contributions have made a BIG difference in the lives of countless animals, providing them with love, care, and second chances - we are building a brighter future for animals.

Many of our volunteers have also served our cause for many years and we wish to acknowledge this.

Special thanks

Congratulations to our 2024 National Volunteer Awards winners.



Fantastic Foster Family
Mel Knapp (Dunedin Centre)

Over the 15 years she has been a dedicated foster parent. Mel has fostered a staggering 550+ kittens. Her 24/7 wraparound care has saved many lives, and the team is endlessly grateful.



Going the Extra Mile
Janet Levy (Wellington Centre)

Janet's eco-conscious efforts and dedication have been so helpful. She established amazing relationships with various organisations to bring in supplies and distribute unused ones to other rescues.



Sensational Centre Team
Jen Smith and Nicola Michelle (Christchurch Centre)

Known for their high standard of work, love and affection for the cats, and initiative in taking on additional tasks, Jen and Nicola have been a fantastic asset.



Devoted Volunteer
Felicity Bowden (Māngere Centre)

Felicity has dedicated an astounding 30 years to volunteering. Her commitment knows no bounds, and her legacy of dedication and hard work will continue to inspire.



Outstanding Op Shop Team
Cambridge Op Shop team

The team's efforts in sorting donations, maintaining a well-presented shop, and providing excellent customer service have set them apart. Their kindness and genuine conversations with customers have built strong relationships and attracted high-quality donations.



Our community

Working with animal welfare organisations and responding to emergencies

In our communities across New Zealand, we recognise that while our shelters provide indispensable temporary care, they are not ideal long-term environments for animals due to stress and potential disease. To mitigate this, our focus has been on proactive community engagement – addressing overpopulation and abandonment to reduce shelter admissions.

This year our national desexing programme reached out to those in need and successfully helped desex 19,369 animals. This initiative is projected to prevent thousands of unwanted kittens and puppies from being born next year.

Our educational efforts continue; through advice initiatives, we have empowered pet owners with essential knowledge and resources. As a result, countless animals enjoy healthier lives within their loving homes rather than facing relinquishment. Our Inspectors

have been instrumental in these efforts in 2023/24 there were 2956 complaint jobs that resulted in 3,039 educational outcomes or warnings issued. There were 3,427 animals that were brought into our care by our Inspectors.

Financial hardship should never equate to neglect or surrender. Through food assistance programmes, we've ensured pets remain with their families during tough economic times.

Collaboration remains key; our partnerships with numerous rescue groups is working well as we've supplied them with food, flea and worm treatments and desexing vouchers (Desexing Grant facilitated by Companion Animals Trust New Zealand). These alliances leverage local insights ensuring an all-encompassing approach towards animal welfare.

CASE STUDY

During emergencies, SPCA ensures the safety and well-being of animals. In February 2024, a large wildfire broke out in Christchurch's Port Hills, leading to the evacuation of over 100 households. The fire, which began on Worsley Road, quickly spread due to strong winds and high temperatures, covering at least 630 hectares of land.

SPCA's Canterbury team offered emergency boarding, food, and general supplies to those impacted by the fires. They set up emergency shelters and provided medical care to animals in need. Additionally, SPCA worked closely with local authorities to ensure the safe evacuation and care of pets from the affected areas. Many locals offered temporary foster homes for displaced animals, and others donated supplies such as blankets, towels, toys, dog crates and funds to support the emergency efforts.

In June 2023, severe storms hit the Hawke's Bay region, causing widespread flooding and damage.

The storms, part of the aftermath of Cyclone Gabrielle, led to significant disruption and displacement of both people and animals. SPCA teams in Hawke's Bay rescued displaced animals and provided life-saving transport and shelter. They coordinated with the Ministry for Primary Industries (MPI), the Massey University Veterinary Emergency Response Team (VERT), and HUHA to manage animal rescue and emergency housing. SPCA also provided kennels to pet owners who had to evacuate their homes, ensuring their pets had a safe place to stay.

We also transported 30 kittens to the Wellington Centre for rehoming, allowing the Hawke's Bay teams to focus on the immediate cyclone response. Our work during the Hawke's Bay storms ensured that many animals received the care and protection they needed during this challenging time.



06
SPCA
Annual
Snapshot



Achievements:

Advocate

- 78** Submissions on Animal Welfare issues in the last year
- 14** Expert and informal opinions written for cruelty investigations
- 167** Stakeholder meetings attended to advocate and advance animal welfare
- 30** Involvements in advisory groups and committees

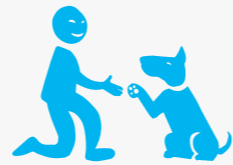


SPCA Certified

- 55 Million** Number of animals lives improved (per annum)
- 341** Certified facilities audited

Protect and Seek Justice

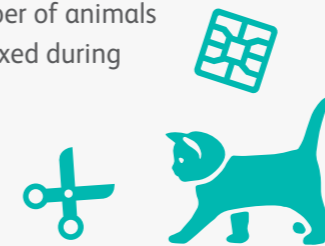
- 13,972** Cruelty complaints received
- 63** Prosecution charges filed in court
- 3,531** Jobs resulted in verbal advice and assistance
- 3,039** Education outcomes and warnings issued
- 8,669** Ambulance jobs recorded
- 577** Of which were animal rescue jobs
- 3,427** Animals brought into SPCA care by Inspectors
- 20** Species of animals at jobs attended – ranging from alpacas to reptiles



Desexing

- 32,984** Total animals desexed across all programmes
 - 13,615** Animals desexed in SPCA Centres
 - 19,369** Animals desexed through our National Desexing Programme, including Snip 'n' Chip, community desexing and grants
- National Desexing Programme breakdown:**
- 2,629** Animals desexed as part of our SPCA Desexing Grant work – gifted to animal rescue groups

- 7,202** Animals desexed through Snip 'n' Chip
 - 9,538** Desexed through our Community Desexing and other desexing activities
 - 115,961** Estimated unwanted kittens and puppies births prevented
- (16,727 - audited number of animals microchipped and desexed during the year)



Educate

- 1,401** Children attended our Live Webinars
- 1,207** Schools using the SPCA Teachers' Portal
- 52,334** Kids' Portal session
- 4,882** Kids' Education Video views
- 1,205** Downloads of our Kind Matters Newsletter



Rescue, Rehabilitate and Rehome

- 30,242** Total animals cared for
- 16,071** Animals successfully adopted
- 59%** Of our animals were in foster care each month





Social and community impact of SPCA’s work in the community - The heartbeat at your feet and on your lap

SPCA Centres are more than just a place for animals; they are part of the community.

Animals are more than companions; they are family members, especially for those who find it hard to connect with people. Our Centres operate with a strong support system, with approximately six volunteers for every staff member, making sure both animals and the community receive the care they need.

To ensure our Centre’s continue to be valued community assets, we are committed to upgrading and improving our network to better serve local communities and improve animal welfare outcomes. Starting in our biggest demographic areas and spreading across the country, these upgrades will ensure that our facilities are equipped to provide the best care possible.

SPCA’s programmes are also integral to the animal welfare ecosystem, fostering empathy, education, and support. One of the key elements is the education programme in early childhood centres, primary and

intermediate schools. Instructional readers, available in four languages, are placed in every school, building empathy and compassion through engaging stories that teach care and wellbeing. Over four weeks, webinars cover topics like how animals think and feel, while comprehensive units for early childhood, primary, and intermediate students span subjects from arts to math. The innovative Minecraft game, ‘Care and Create,’ develops empathy, communication, teamwork, critical thinking, and digital literacy. The ‘Kind Matters’ newsletter, filled with games and activities, improves community safety through education, and the Children’s Portal offers videos, learning booklets, and stories in Te Reo Māori.

Adoption programmes at SPCA help match individuals and families with animals, providing unconditional love, improving health and wellbeing, and reducing isolation



Statement of Service Performance:

- **Vision:** A world where all animals are treated with respect and kindness.
- **Purpose:** To advance animal welfare and prevent cruelty.
- **Values:** We are One, We are Kind, We are Brave, We Thrive, We Serve.
- **Key Areas of Impact:** Prevention, Intervention, and Care. This includes desexing, advocacy, education, prosecutions, adoptions, and SPCA Certified program.

for animals and their families. Adoption Days are community events where people meet and connect with animals and each other, fostering a sense of belonging and shared purpose.

Volunteers in our animal Centres are the lifeblood of SPCA, supporting all areas of work, including the hospital and admin support. SPCA provides tailored opportunities for those with health or wellbeing challenges, teaching children responsibility and care. Organisational volunteering sees many organisations bringing their people to volunteer, building skills and community understanding.

The Inspectorate education programme conducts annual visits, focusing on educating people about New Zealand’s animal welfare standards. Community Support Officers work to identify and support community needs, while animal rescue programmes assist community members who have set up their own rescues.

In times of crisis, SPCA is there to ensure animals are safe. Our disaster recovery efforts provide needed support during natural disasters, while domestic abuse support helps people exit abusive situations. We also

assist the elderly and those needing hospital care or moving into residential care to rehome their pets through our ‘Pet Legacy’ programme.

Desexing programmes like Snip ‘n’ Chip offer subsidised desexing for felines, while community desexing provides free services for those in need, with active outreach and a mobile desexing unit bringing services to lower socioeconomic communities. SPCA Op Shops offer many people the chance to volunteer, often teaching employment skills to those new to the workforce. Our Op Shops are also often a place where new immigrants have the chance to learn English, understand New Zealand culture, and connect with others.

SPCA’s variety of programmes are a testament to the power of community-driven initiatives. By supporting empathy and education, these programmes improve the lives of animals and strengthen the social fabric. Through volunteerism, education, and outreach, SPCA ensures that animals and people alike receive the care and connection they need, truly embodying the heartbeat at your feet and on your lap. This is our community impact and why we need your continuing help to fund our work – thank you!



“Despite the challenges of 2024, our dedication to animal welfare is the reason we come to work every day. We can only do this with your help. Animals receive the support they need because of the incredible backing of our community, making sure that every animal experiences the love and care they deserve. I am grateful to our team, volunteers, fosterers, donors, adopters, and partners. Your commitment and generosity have been the backbone of our success. Thank you for standing with us and making a difference in the lives of countless animals.”

- Todd Westwood, SPCA CEO



**Together, we can
give them a better life.**